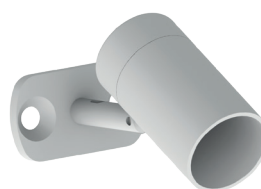
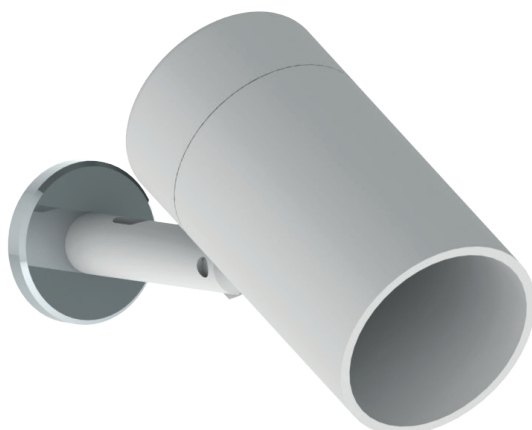


Proiettore installabile a calamita e con supporto e viti dal design minimale ed elegante. Dimensioni estremamente ridotte. Luce puntuale ideale per ambienti domestici.

Projector that can be installed by magnet and with support and screws with a minimal and elegant design. Extremely small size. Point light ideal for domestic environments.

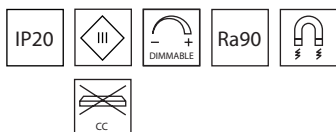
SPOT MICRO



13°



30°



FINITURE / FINISHES

| | | | |
|--|------|-----|--|
| Nero / Black RAL 9005 | NR | BN | Bianco / White RAL 9016 |
| Antracite / Anthracite | AT | MK | Moka |
| Corten | CT | RM | Rame / Copper |
| Ottone / Brass | OT | AL | Alluminio / Aluminium |
| Ottone brunito / Burnished brass | OTBR | TT | Titanio L55 / Titanium L55 Galvanica / Galvanic |
| Anodizzato Nero / Anodized black | AN | AA | Anodizzato Alluminio / Anodized aluminium |
| Anodizzato Bronzo / Anodized bronze | BRS | AC | Anodizzato Champagne / Anodized champagne |
| Cromo lucido / Polished chrome | CR | OR | Oro lucido / Shiny gold |
| Oro satinato / Satin gold | ORST | ORM | Oro rame / Copper gold |
| | | CS | Custom |

| | Code | XX (LED Color) | YY° (Optic) | ZZ (Power) | Flux |
|----|-------|----------------|-------------|------------|--------|
| MG | SPMMG | HW (2700K) | 13 | | |
| BS | SPMBS | WW (3000K) | 30 | O2 (2 W) | 228 lm |
| | | NN (4000K) | | | |

MATERIALI / MATERIALS

Corpo in alluminio tornito dal pieno, verniciabile in un'ampia gamma di colori. Snodo con terminale magnetico.

Aluminum body turned from solid, paintable in a wide range of colors. Joint with magnetic terminal.

ELETTRONICA / ELECTRONICS

Led ad alto rendimento. Dimmerabile DALI, PUSH, DMX, 0-10, 1-10 e TAGLIO DI FASE.

High performance LED. Dimmable DALI, PUSH, DMX, 0-10, 1-10 and PHASE CUT.

