

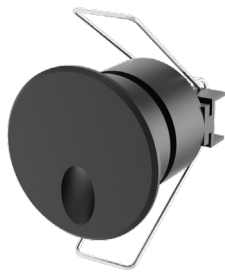
# BRILL ROUND

Corpo illuminante da incasso a parete. Dimensioni ridotte ed emissione a 45° sul piano di calpestio. Ideale come segnapasso. Molle di tenuta se applicato senza cassaforma.

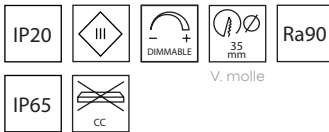
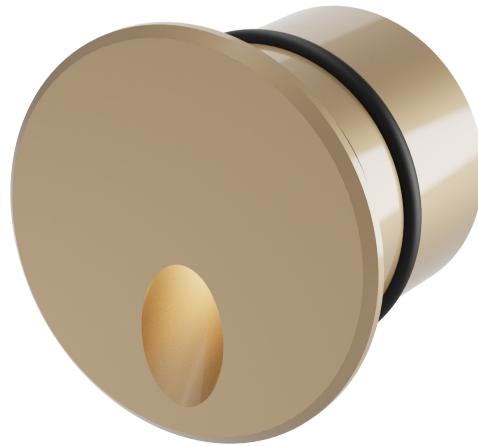
*Recessed wall light fitting. Reduced dimensions and 45° emission on the walking surface. Ideal as a path marker. Sealing springs if applied without formwork.*



45° ASY



BRILL ROUND con molle



V. molle

Code	XX (LED Color)	YY° (Optic)	ZZ (Power)	Flux
	HW (2700K)		O1 (1 W)	125 lm
BRLRN	WW (3000K)	45 [ASY]	O2 (2 W)	228 lm
	NN (4000K)			

## MATERIALI / MATERIALS

Corpo in alluminio tornito dal pieno, verniciabile in un'ampia gamma di colori e custom. Cassaforma in resina di alta qualità.

*Aluminum body turned from solid, paintable in a wide range of colors and custom. High quality resin formwork.*

## ELETTRONICA / ELECTRONICS

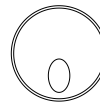
Led ad alto rendimento. Dimmerabile DALI, PUSH, 0-10, 1-10, DMX e TAGLIO DI FASE.

*High performance LED. Dimmable DALI, PUSH, 0-10, 1-10, DMX and PHASE CUT.*

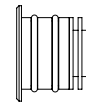
## FINITURE / FINISHES

Nero / Black RAL 9005	NR	BN	Bianco / White RAL 9016
Antracite / Anthracite	AT	MK	Moka
Corten	CT	RM	Rame / Copper
Ottone / Brass	OT	AL	Alluminio / Aluminium
Ottone brunito / Burnished brass	OTBR	TT	Titanio L55 / Titanium L55 Galvanica / Galvanic
Anodizzato Nero / Anodized black	AN	AA	Anodizzato Alluminio / Anodized aluminium
Anodizzato Bronzo / Anodized bronze	BRS	AC	Anodizzato Champagne / Anodized champagne
Cromo lucido / Polished chrome	CR	OR	Oro lucido / Shiny gold
Oro satinato / Satin gold	ORST	ORM	Oro rame / Copper gold
		CS	Custom

Ø40mm



31mm



Cassaforma per cartongesso



Accessorio cassaforma per cartongesso  
Formwork accessory for plasterboard